

# S.D.S.

Safety Data Sheet

# BLUEWAVE

## BILGE CLEANER

Ready-to-Use & Eco Friendly

V2.1 January 3, 2023

### Section 1: Identifications

<b>Product Name:</b>	BlueWave Bilge Cleaner
<b>Synonyms:</b>	Not available.
<b>Product Use:</b>	Cleaner.
<b>Restrictions on Use:</b>	Not available.
<b>Manufacturer/Supplier:</b>	BLUEWAVE PRODUCTS & SERVICES OF FLORIDA, LLC 5007 Denver Street Tampa, FL 33619 USA
<b>Phone Number:</b>	813-556-7866 (Customer Service)
<b>Emergency Phone:</b>	PERS (US & Canada) 1-800-633-8253 (24 hr.) PERS (International) 1-800-424-9300 (24 hr.)
<b>Date of Preparation of SDS:</b>	January 3, 2022

### Section 2: Hazard(s) Identification

#### GHS INFORMATION

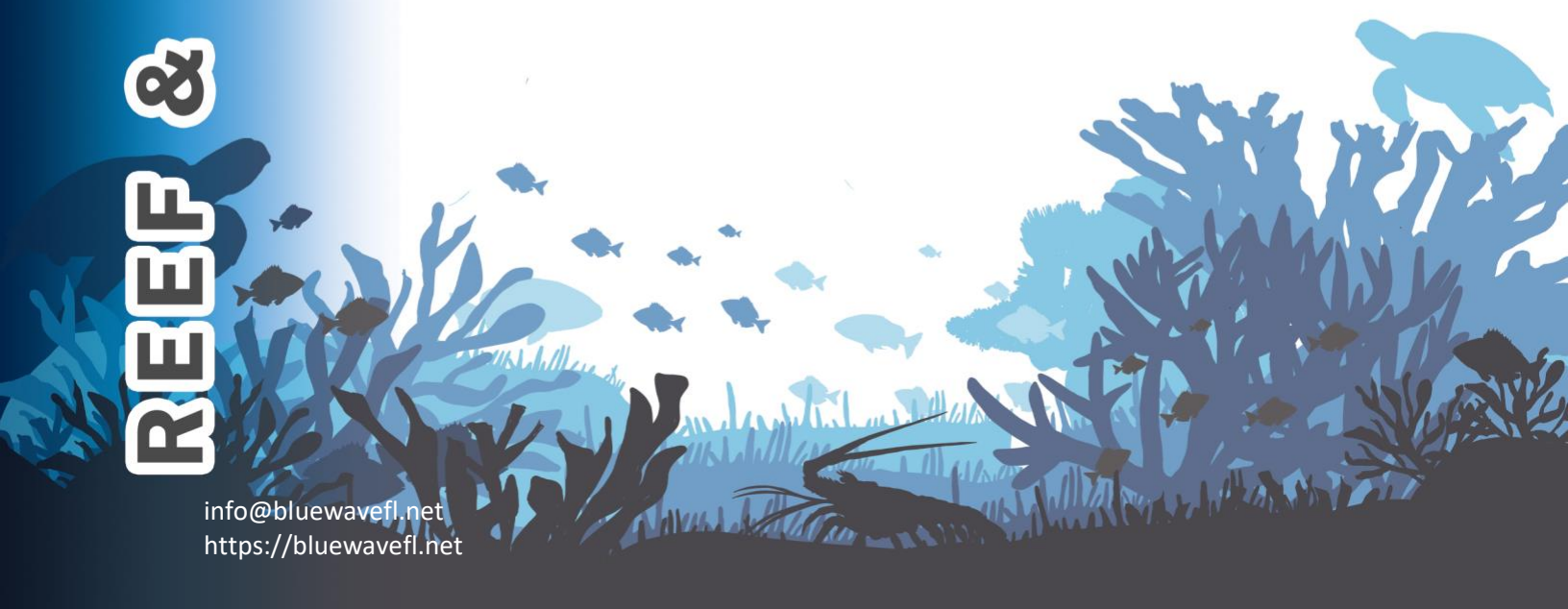
**Classification:**

Not hazardous according to OSHA criteria (29 CFR 1910.1200).

#### LABEL ELEMENTS

<b>Hazard Pictogram(s):</b>	None.
<b>Signal Word:</b>	None.
<b>Hazard Statements:</b>	Not applicable.

REEF & OCEAN FRIENDLY



REEF & OCEAN FRIENDLY

#### Precautionary Statements

**Prevention:** Not applicable.

**Response:** Not applicable.

**Storage:** Not applicable.

**Disposal:** Not applicable.

**Hazards Not Otherwise Classified:** Not applicable.

**Ingredients with Unknown Toxicity:** 7% of this product mixture consists of ingredient(s) of unknown acute toxicity.

This material is considered hazardous by the OSHA Hazard Communication Standard, (29 CFR 1910.1200).

#### Section 3: Composition/Information on Ingredients

Hazardous Ingredient(s)	Common name/Synonyms	CAS No.	% wt./wt.
Oxirane, 2-methyl-, polymer with oxirane, mono(2-ethylhexyl) ether	Not available.	64366-70-7	3 – 7
Ethanol	Not available.	64-17-5	3 – 7

The specific chemical identity and concentration have been withheld as a trade secret.

#### Section 4: First-Aid Measures

**Inhalation:** If inhaled: Call a poison center or doctor if you feel unwell.

**Acute and delayed symptoms and effects:** May cause respiratory irritation. Signs/symptoms may include cough, sneezing, nasal discharge, headache, hoarseness, and nose and throat pain.

# S.D.S.

## Safety Data Sheet

# BLUEWAVE

## BILGE CLEANER

### Ready-to-Use & Eco Friendly

V2.1 January 3, 2023

# REEF & OCEAN FRIENDLY

- Eye Contact:** If in eyes: Rinse cautiously with water for at least 15 minutes. Remove contact lenses, if present and easy to do. Continue rinsing. Call a poison center or doctor if you feel unwell.
- Acute and delayed symptoms and effects:** Causes serious eye irritation. Signs/symptoms may include redness, swelling, pain, tearing, and blurred or hazy vision. Ethanol may cause painful sensitization to light, chemical conjunctivitis and corneal damage.
- Skin Contact:** If on skin: Wash with plenty of water. Call a poison center or doctor if you feel unwell.
- Acute and delayed symptoms and effects:** May cause skin irritation. Signs/symptoms may include localized redness, swelling, and itching.
- Ingestion:** If swallowed: Call a poison center or doctor if you feel unwell. If vomiting occurs naturally, have victim lean forward to reduce the risk of aspiration. Do NOT induce vomiting unless directed to do so by medical personnel. Never give anything by mouth to an unconscious person.
- Acute and delayed symptoms and effects:** May cause gastrointestinal irritation. Signs/symptoms may include abdominal pain, stomach upset, nausea, vomiting and diarrhea.
- General Advice:** In case of accident or if you feel unwell, seek medical advice immediately (show the label or SDS where possible).
- Note to Physicians:** Symptoms may not appear immediately.

## Section 5: Fire-Fighting Measures

### FLAMMABILITY AND EXPLOSION INFORMATION

Not flammable or combustible by OSHA criteria.

- Sensitivity to Mechanical Impact:** This material is not sensitive to mechanical impact.
- Sensitivity to Static Discharge:** This material is not sensitive to static discharge.



REEF & OCEAN FRIENDLY

#### MEANS OF EXTINCTION

##### Suitable Extinguishing Media:

Small Fire: Dry chemical, CO<sub>2</sub>, water spray or regular foam.

Large Fire: Water spray, fog or regular foam. Move containers from fire area if you can do it without risk.

##### Unsuitable Extinguishing Media:

Not available.

##### Products of Combustion:

Oxides of carbon.

##### Protection of Firefighters:

Fire may produce irritating, corrosive and/or toxic gases. Runoff from fire control or dilution water may cause pollution. Wear positive pressure self-contained breathing apparatus (SCBA). Structural firefighters' protective clothing will only provide limited protection.

### Section 6: Accidental Release Measures

##### Emergency Procedures:

Keep unauthorized personnel away. Stay upwind. Keep out of low areas. Ventilate closed spaces before entering.

##### Personal Precautions:

Do not touch or walkthrough spilled material. Use personal protection recommended in Section 8.

##### Environmental Precautions:

Keep out of drains, sewers, ditches, and waterways.

##### Methods for Containment:

Stop leak if without risk. Do not flush to sewer or allow to enter waterways.

##### Methods for Clean-Up:

Absorb or cover with dry earth, sand or other non-combustible material and transfer to containers

##### Other Information:

See Section 13 for disposal considerations.



# S.D.S.

## Safety Data Sheet

# BLUEWAVE

## BILGE CLEANER

### Ready-to-Use & Eco Friendly

V2.1 January 3, 2023

## Section 7: Handling and Storage

### Handling:

Do not swallow. Wash hands thoroughly after handling. See Section 8 for information on Personal Protective Equipment.

### Storage:

Store away from incompatible materials. See section 10 for information on Incompatible Materials. Keep out of the reach of children.

## Storage 8: Exposure Controls/Personal Protection

### Exposure Guidelines

#### Component

Oxirane, 2-methyl-, polymer with oxirane, mono(2-ethylhexyl) ether [CAS No. 64366-70-7]

**ACGIH:** No TLV established.

**OSHA:** No PEL established;

Ethanol [CAS No. 64-17-5]

**ACGIH:** 1000 ppm (STEL); A3 (2008)

**OSHA:** 1000 ppm (TWA), 1900 mg/m<sup>3</sup> (TWA);

**PEL:** Permissible Exposure Limit

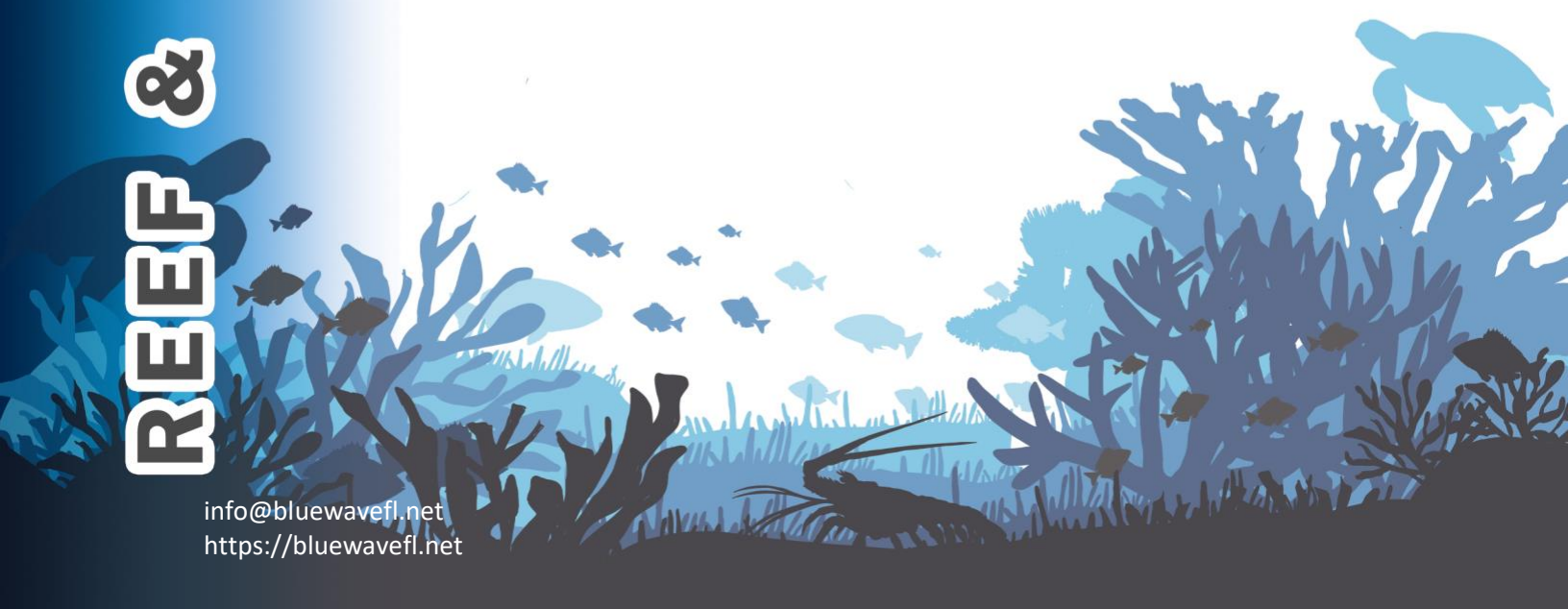
**TVL:** Threshold Limit Value

**TWA:** Time-Weighted Average

### Engineering Controls:

Use ventilation adequate to keep exposures (airborne levelsof dust, fume, vapour, gas, etc.) below recommended exposure limits.

# REEF & OCEAN FRIENDLY



REEF & OCEAN FRIENDLY

#### PERSONAL PROTECTIVE EQUIPMENT (PPE)



**Eye/Face Protection:**

Wear chemical safety goggles. Use equipment for eye protection that meets the standards referenced by OSHA regulations in 29 CFR 1910.133 for Personal Protective Equipment.

**Hand Protection:**

Wear protective gloves. Consult manufacturer specifications for further information.

**Skin and Body Protection:**

Wear protective clothing.

**Respiratory Protection:**

If engineering controls and ventilation are not sufficient to control exposure to below the allowable limits then an appropriate NIOSH/MSHA approved air-purifying respirator, or self-contained breathing apparatus must be used. Supplied air breathing apparatus must be used when oxygen concentration are low or if airborne concentrations exceed the limits of the air-purifying respirators.

**General Hygiene Considerations:**

Handle according to established industrial hygiene and safety practices. Consult a competent industrial hygienist to determine hazard potential and/or the PPE manufacturers to ensure adequate protection.

### Section 9: Physical and Chemical Products

<b>Appearance:</b>	Colourless, clear liquid.
<b>Colour:</b>	Colourless.
<b>Odour:</b>	Coconut.
<b>Odour Threshold:</b>	Not available.
<b>Physical State:</b>	Liquid.
<b>pH:</b>	5.5



# S.D.S.

## Safety Data Sheet

# BLUEWAVE

## BILGE CLEANER

### Ready-to-Use & Eco Friendly

V2.1 January 3, 2023

# REEF & OCEAN FRIENDLY

<b>Melting Point / Freezing Point:</b>	Not available.
<b>Initial Boiling Point:</b>	Not available.
<b>Boiling Range:</b>	Not available.
<b>Flash Point:</b>	Not available.
<b>Evaporation Rate:</b>	Not available.
<b>Flammability (solid, gas):</b>	Not applicable.
<b>Lower Flammability Limit:</b>	Not available.
<b>Upper Flammability Limit:</b>	Not available.
<b>Vapor Pressure:</b>	Not available.
<b>Vapor Density:</b>	Not available.
<b>Relative Density:</b>	0.994 (Water = 1) at 20 °C (68 °F)
<b>Solubilities:</b>	Miscible in water.
<b>Partition Coefficient: n- Octanol/Water:</b>	Not available.
<b>Auto-ignition Temperature:</b>	Not available.
<b>Decomposition Temperature:</b>	Not available.
<b>Viscosity:</b>	Not available.
<b>Percent Volatile, wt. %:</b>	Not available.
<b>VOC content, wt. %:</b>	Not available.
<b>Density:</b>	0.992 g/cm <sup>3</sup> at 20 °C (68 °F)
<b>Coefficient of Water/Oil Distribution:</b>	Not available.

## Section 10: Stability and Reactivity

<b>Reactivity:</b>	Contact with incompatible materials. Exposure to heat.
<b>Chemical Stability:</b>	Stable under normal storage conditions.
<b>Possibility of Hazardous Reactions:</b>	None known.

# S.D.S.

## Safety Data Sheet

# BLUEWAVE

## BILGE CLEANER

### Ready-to-Use & Eco Friendly

V2.1 January 3, 2023

**Conditions to Avoid:**

Contact with incompatible materials. Exposure to heat.

**Incompatible Materials:**

Strong acids. Strong oxidizers.

**Hazardous Decomposition Products:**

Not available.

## Section 11: Toxicological Information

### EFFECTS OF ACUTE EXPOSURE

#### Product Toxicity

**Oral:** Not available.

**Dermal:** Not available.

**Inhalation:** Not available.

#### Component Toxicity

Component	CAS No.	LD <sub>50</sub> oral	LD <sub>50</sub> dermal	LC <sub>50</sub>
Oxirane , 2- methyl-, polymer with oxirane, mono(2- ethylhexyl) ether	64366-70-7	Not available.	Not available.	Not Available.
Ethanol	64-17-5	7060 mg/kg (rat)	20000 mg/kg (rabbit)	20000 ppm (rat); 10H

**Likely Routes of Exposure:**

Eye contact. Skin contact. Inhalation. Ingestion.

**Target Organs:**

Skin. Eyes. Gastrointestinal tract. Respiratory system. Blood.  
Central nervous system.

# REEF & OCEAN FRIENDLY



# S.D.S.

## Safety Data Sheet

# BLUEWAVE

## BILGE CLEANER

### Ready-to-Use & Eco Friendly

V2.1 January 3, 2023

# REEF & OCEAN FRIENDLY

#### Symptoms (including delayed and immediate effects)

<b>Inhalation:</b>	May cause respiratory irritation. Signs/symptoms may include cough, sneezing, nasal discharge, headache, hoarseness, and nose and throat pain.
<b>Eye:</b>	Causes serious eye irritation. Signs/symptoms may include redness, swelling, pain, tearing, and blurred or hazy vision. Ethanol may cause painful sensitization to light, chemical conjunctivitis and corneal damage.
<b>Skin:</b>	May cause skin irritation. Signs/symptoms may include localized redness, swelling, and itching.
<b>Ingestion:</b>	May cause gastrointestinal irritation. Signs/symptoms may include abdominal pain, stomach upset, nausea, vomiting and diarrhea.
<b>Skin Sensitization:</b>	Not available.
<b>Respiratory Sensitization:</b>	Not available.
<b>Medical Conditions Aggravated By Exposure:</b>	Not available.

#### EFFECTS OF CHRONIC EXPOSURE (from short and long-term exposure)

<b>Target Organs:</b>	Skin. Eyes. Gastrointestinal tract. Respiratory system. Blood. Cardiovascular system. Liver. Kidneys. Reproductive system. Central nervous system.
<b>Chronic Effects:</b>	Prolonged or repeated contact may dry skin and cause irritation. Prolonged exposure to Ethanol may cause liver, kidney, and heart damage.
<b>Carcinogenicity:</b>	Product is not classified as a carcinogen. See Component Carcinogenicity table below for information on individual components. Animal studies with Ethanol have reported the development of tumours.

# S.D.S.

## Safety Data Sheet

# BLUEWAVE

## BILGE CLEANER

### Ready-to-Use & Eco Friendly

V2.1 January 3, 2023

#### Component Carcinogenicity

Component	ACGIH	IARC	NTP	OSHA	Prop 65
Ethanol	A3	Group 1	Not listed.	OSHA Carcinogen.	Not listed.

**Mutagenicity:** Laboratory experiments with Ethanol have resulted in mutagenic effects.

**Reproductive Effects:** Ethanol may cause reproductive effects.

**Developmental Effects**

**Teratogenicity:** Not available.

**Embryotoxicity:** Ethanol has been shown to produce fetotoxicity in the embryo or fetus of laboratory animals. Prenatal exposure to ethanol is associated with a distinct pattern of congenital malformations that have collectively been termed the "fetal alcohol syndrome".

**Toxicologically Synergistic Materials:** Not available.

#### Section 12: Ecological Information

**Ecotoxicity:** Not available.

**Persistence / Degradability:** Not available.

**Bioaccumulation / Accumulation:** Not available.

**Mobility in Environment:** Not available.

**Other Adverse Effects:** Not available.

#### Section 13: Disposal Considerations

**Disposal Instructions:** Disposal should be in accordance with applicable regional, national and local laws and regulations. Local regulations may be more stringent than regional or national requirements.

# REEF & OCEAN FRIENDLY



# S.D.S.

Safety Data Sheet

# BLUEWAVE

## BILGE CLEANER

Ready-to-Use & Eco Friendly

V2.1 January 3, 2023

REEF & OCEAN FRIENDLY

### Section 14: Transport Information

#### U.S. Department of Transportation (DOT)

**Proper Shipping Name:** Not regulated.  
**Class:** Not applicable.  
**UN Number:** Not applicable.  
**Packing Group:** Not applicable.  
**Label Code:** Not applicable.

#### ICAO/IATA

**Proper Shipping Name:** Not regulated.  
**Class:** Not applicable.  
**UN Number:** Not applicable.  
**Packing Group:** Not applicable.  
**Label Code:** Not applicable.

#### IMDG

**Proper Shipping Name:** Not regulated.  
**Class:** Not applicable.  
**UN Number:** Not applicable.  
**Packing Group:** Not applicable.  
**Label Code:** Not applicable.

### Section 15: Regulatory Information

#### Chemical Inventories US (TSCA)

The components of this product are in compliance with the chemical notification requirements of TSCA.



# S.D.S.

## Safety Data Sheet

# BLUEWAVE

## BILGE CLEANER

### Ready-to-Use & Eco Friendly

V2.1 January 3, 2023

#### Federal Regulations

##### United States

This SDS has been prepared to meet the U.S. OSHA Hazard Communication Standard, 29 CFR 1910.1200.

##### SARA Title III

No components are listed.

#### State Regulations

##### Massachusetts

US Massachusetts Commonwealth's Right-to-Know Law (Appendix A to 105 Code of Massachusetts Regulations Section 670.000)

Component	CAS No.	RTK List
Ethanol	64-17-5	Listed.

##### New Jersey

US New Jersey Worker and Community Right-to-Know Act (New Jersey Statute Annotated Section 34:5A-5)

Component	CAS No.	RTK List
Ethanol	64-17-5	Listed.

##### Pennsylvania

US Pennsylvania Worker and Community Right-to-Know Law (34 Pa. Code Chap. 301-323)

Component	CAS No.	RTK List
Ethanol	64-17-5	Listed.

##### California

###### California Prop 65:

This product does not contain chemicals known to the State of California to cause cancer, birth defects or other reproductive harm.

# REEF & OCEAN FRIENDLY



# S.D.S.

Safety Data Sheet

# BLUEWAVE

## BILGE CLEANER

Ready-to-Use & Eco Friendly

V2.1 January 3, 2023

### Section 16: Other Information

**Disclaimer:**

The information contained in this document applies to this specific material as supplied. It may not be valid for this material if it is used in combination with any other materials. It is the user's responsibility to satisfy oneself as to the suitability and completeness of this information for their own particular use.

<b>Date of Preparation of SDS:</b>	January 3, 2022
<b>Version:</b>	2.1
<b>GHS SDS Prepared by:</b>	Deerfoot Consulting Inc. Phone: (403) 720-3700

**REEF & OCEAN FRIENDLY**

