

S.D.S.

Safety Data Sheet

BLUEWAVE

COMPLETE BOAT WASH

Concentrated & Eco Friendly

V2.1 January 3, 2022

Section 1: Identifications

Product Name:	BlueWave Complete Boat Wash
Synonyms:	Not available.
Product Use:	Cleaner.
Restrictions on Use:	Not available.
Manufacturer/Supplier:	BLUEWAVE PRODUCTS & SERVICES OF FLORIDA, LLC 5007 Denver Street Tampa, FL 33619 USA
Phone Number:	813-556-7866 (Customer Service)
Emergency Phone:	PERS (US & Canada) 1-800-633-8253 (24 hr.) PERS (International) 1-800-424-9300 (24 hr.)
Date of Preparation of SDS:	January 3, 2022

Section 2: Hazard(s) Identification

GHS INFORMATION

Classification:

Not hazardous according to OSHA criteria (29 CFR 1910.1200).

LABEL ELEMENTS

Hazard Pictogram(s):

None.

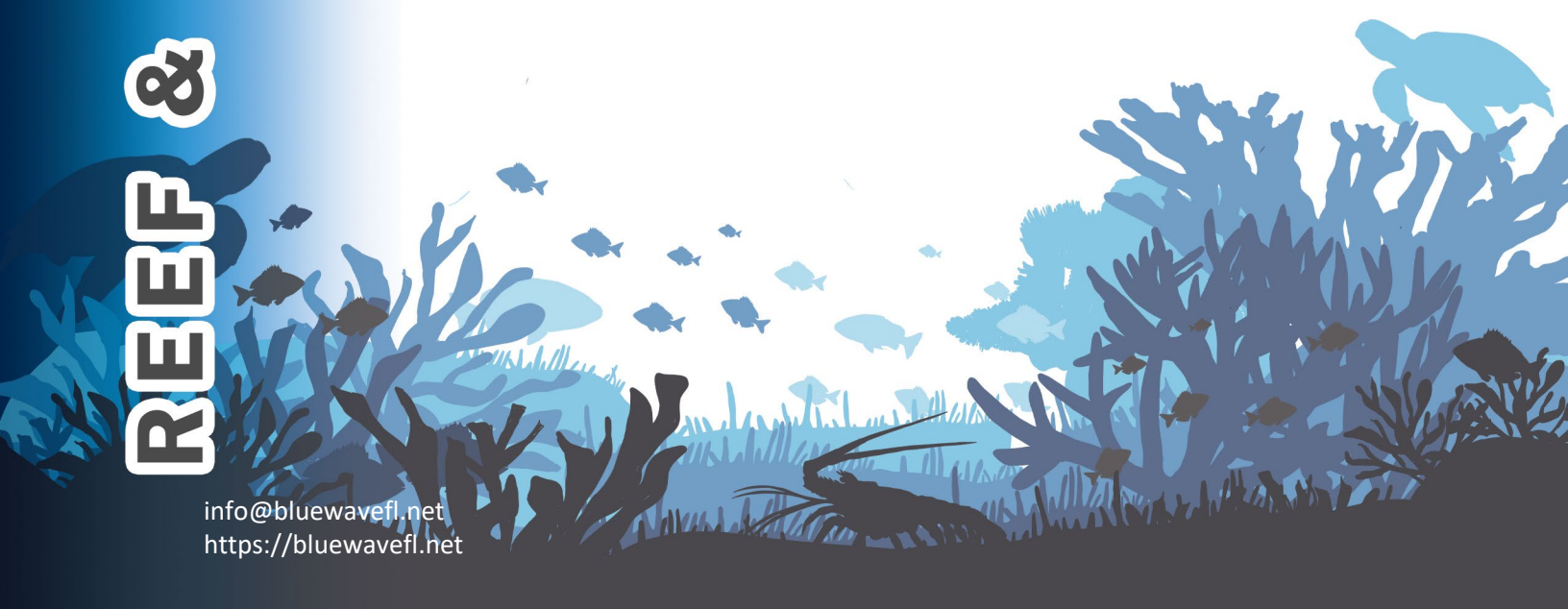
Signal Word:

None.

Hazard Statements:

Not applicable.

REEF & OCEAN FRIENDLY



REEF & OCEAN FRIENDLY

Precautionary Statements

Prevention: Not applicable.

Response: Not applicable.

Storage: Not applicable.

Disposal: Not applicable.

Hazards Not Otherwise Classified: Not applicable.

Ingredients with Unknown Toxicity: 5% of this product mixture consists of ingredient(s) of unknown acute toxicity.

This material is considered hazardous by the OSHA Hazard Communication Standard, (29 CFR 1910.1200).

Section 3: Composition/Information on Ingredients

Hazardous Ingredient(s)	Common name/Synonyms	CAS No.	% wt./wt.
-------------------------	----------------------	---------	-----------

No hazardous components are present at or above reportable levels.

The specific chemical identity and concentration have been withheld as a trade secret.

Section 4: First-Aid Measures

Inhalation: If inhaled: Call a poison center or doctor if you feel unwell.

Acute and delayed symptoms and effects: May cause respiratory irritation. Signs/symptoms may include cough, sneezing, nasal discharge, headache, hoarseness, and nose and throat pain.

S.D.S.

Safety Data Sheet

BLUEWAVE

COMPLETE BOAT WASH

Concentrated & Eco Friendly

V2.1 January 3, 2022

REEF & OCEAN FRIENDLY

Eye Contact: If in eyes: Rinse cautiously with water for several minutes. Remove contact lenses, if present and easy to do. Continue rinsing. Call a poison center or doctor if you feel unwell.

Acute and delayed symptoms and effects: Causes serious eye irritation. Signs/symptoms may include redness, swelling, pain, tearing, and blurred or hazy vision.

Skin Contact: If on skin: Wash with plenty of water. Call a poison center or doctor if you feel unwell.

Acute and delayed symptoms and effects: May cause skin irritation. Signs/symptoms may include localized redness, swelling, and itching.

Ingestion: If swallowed: Call a poison center or doctor if you feel unwell. If vomiting occurs naturally, have victim lean forward to reduce the risk of aspiration. Do NOT induce vomiting unless directed to do so by medical personnel. Never give anything by mouth to an unconscious person.

Acute and delayed symptoms and effects: May cause gastrointestinal irritation. Signs/symptoms may include abdominal pain, stomach upset, nausea, vomiting and diarrhea.

General Advice: In case of accident or if you feel unwell, seek medical advice immediately (show the label or SDS where possible).

Note to Physicians: Symptoms may not appear immediately.

Section 5: Fire-Fighting Measures

FLAMMABILITY AND EXPLOSION INFORMATION

Not flammable or combustible by OSHA criteria.

Sensitivity to Mechanical Impact: This material is not sensitive to mechanical impact.

Sensitivity to Static Discharge: This material is not sensitive to static discharge.

REEF & OCEAN FRIENDLY

MEANS OF EXTINCTION

Suitable Extinguishing Media:

Small Fire: Dry chemical, CO2, water spray or regular foam.

Large Fire: Water spray, fog or regular foam. Move containers from fire area if you can do it without risk.

Unsuitable Extinguishing Media:

Not available.

Products of Combustion:

Oxides of carbon.

Protection of Firefighters:

Fire may produce irritating, corrosive and/or toxic gases. Runoff from fire control or dilution water may cause pollution. Wear positive pressure self-contained breathing apparatus (SCBA). Structural firefighters' protective clothing will only provide limited protection.

Section 6: Accidental Release Measures

Emergency Procedures:

Keep unauthorized personnel away. Stay upwind. Keep out of low areas. Ventilate closed spaces before entering.

Personal Precautions:

Do not touch or walkthrough spilled material. Use personal protection recommended in Section 8.

Environmental Precautions:

Not applicable.

Methods for Containment:

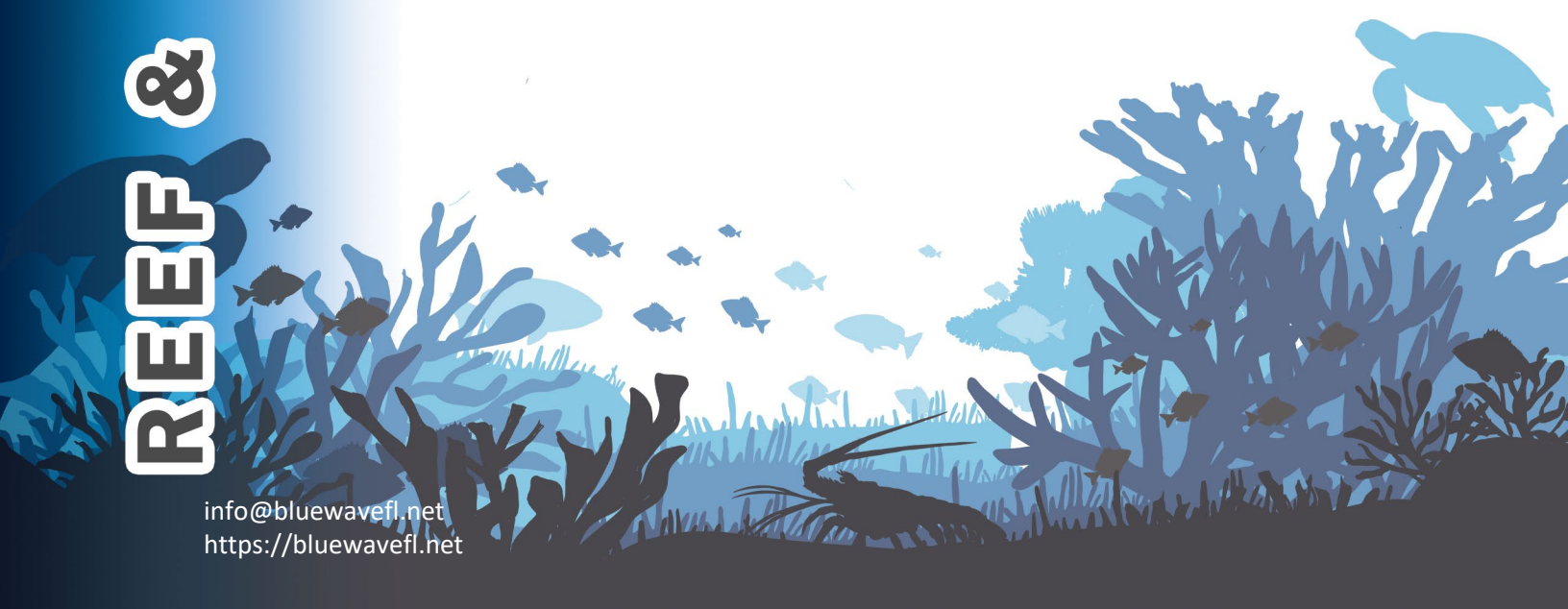
Stop leak if without risk. Do not flush to sewer or allow to enter waterways.

Methods for Clean-Up:

Absorb or cover with dry earth, sand or other non-combustible material and transfer to containers

Other Information:

See Section 13 for disposal considerations.



REEF & OCEAN FRIENDLY

Section 7: Handling and Storage

Handling:

Do not swallow. Wash hands thoroughly after handling. See Section 8 for information on Personal Protective Equipment.

Storage:

Store away from incompatible materials. See section 10 for information on Incompatible Materials. Keep out of the reach of children.

Section 8: Exposure Controls/Personal Protection

Exposure Guidelines

Component

No TLV or PEL established for the components of this product.

PEL: Permissible Exposure Limit

TVL: Threshold Limit Value

Engineering Controls:

Use ventilation adequate to keep exposures (airborne level of dust, fume, vapour, gas, etc.) below recommended exposure limits.

PERSONAL PROTECTIVE EQUIPMENT (PPE)



Eye/Face Protection:

Wear safety glasses. Use equipment for eye protection that meets the standards referenced by OSHA regulations in 29 CFR 1910.133 for Personal Protective Equipment.

Hand Protection:

Wear protective gloves. Consult manufacturer specifications for further information.

Skin and Body Protection:

Wear protective clothing.

REEF & OCEAN FRIENDLY

Respiratory Protection:

If engineering controls and ventilation are not sufficient to control exposure to below the allowable limits then an appropriate NIOSH/MSHA approved air-purifying respirator, or self-contained breathing apparatus must be used. Supplied air breathing apparatus must be used when oxygen concentration are low or if airborne concentrations exceed the limits of the air-purifying respirators.

General Hygiene Considerations:

Handle according to established industrial hygiene and safety practices. Consult a competent industrial hygienist to determine hazard potential and/or the PPE manufacturers to ensure adequate protection.

Section 9: Physical and Chemical Products

Appearance:	Clear liquid.
Colour:	Colourless.
Odour:	Characteristic.
Odour Threshold:	Not available.
Physical State:	Liquid.
pH:	6.90
Melting Point / Freezing Point:	Not available.
Initial Boiling Point:	> 100 °C (212 °F) (estimated)
Boiling Range:	> 100 °C (212 °F) (estimated)
Flash Point:	> 100 °C (212 °F) (estimated)
Evaporation Rate:	Not available.
Flammability (solid, gas):	Not applicable.
Lower Flammability Limit:	Not available.
Upper Flammability Limit:	Not available.
Vapor Pressure:	Not available.

REEF & OCEAN FRIENDLY

Vapor Density:	Not available.
Relative Density:	1.013 (Water = 1) at 20 °C (68 °F)
Solubilities:	Miscible in water.
Partition Coefficient: n- Octanol/Water:	Not available.
Auto-ignition Temperature:	Not available.
Decomposition Temperature:	Not available.
Viscosity:	Not available.
Percent Volatile, wt. %:	Not available.
VOC content, wt. %:	Not available.
Density:	1.011 g/cm ³ at 20 °C (68 °F)
Coefficient of Water/Oil Distribution:	Not available.

Section 10: Stability and Reactivity

Reactivity:	Contact with incompatible materials.
Chemical Stability:	Stable under normal storage conditions.
Possibility of Hazardous Reactions:	None known.
Conditions to Avoid:	Contact with incompatible materials.
Incompatible Materials:	Strong acids. Strong bases. Strong oxidizers.
Hazardous Decomposition Products:	Not available.

Section 11: Toxicological Information

EFFECTS OF ACUTE EXPOSURE

Product Toxicity

Oral:	Not available.
Dermal:	Not available.



S.D.S.

Safety Data Sheet

BLUEWAVE

COMPLETE BOAT WASH

Concentrated & Eco Friendly

V2.1 January 3, 2022

Inhalation: Not available.

Likely Routes of Exposure: Eye contact. Skin contact. Inhalation. Ingestion.

Target Organs: Skin. Eyes. Gastrointestinal tract. Respiratory system.

Symptoms (including delayed and immediate effects)

Inhalation: May cause respiratory irritation. Signs/symptoms may include cough, sneezing, nasal discharge, headache, hoarseness, and nose and throat pain.

Eye: May cause eye irritation. Signs/symptoms may include redness, swelling, pain, tearing, and blurred or hazy vision.

Skin: May cause skin irritation. Signs/symptoms may include localized redness, swelling, and itching.

Ingestion: May cause gastrointestinal irritation. Signs/symptoms may include abdominal pain, stomach upset, nausea, vomiting and diarrhea.

Skin Sensitization: Not available.

Respiratory Sensitization: Not available.

Medical Conditions Not available.

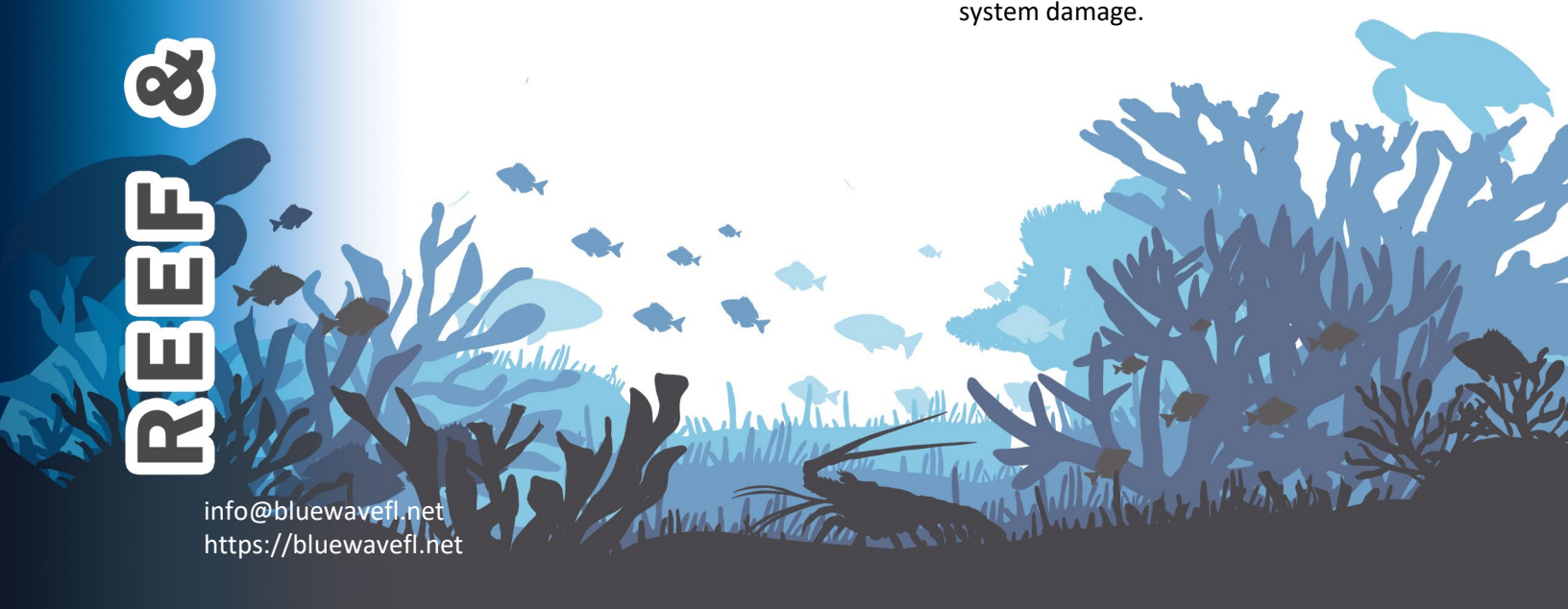
Aggravated By Exposure:

EFFECTS OF CHRONIC EXPOSURE (from short and long-term exposure)

Target Organs: Skin. Eyes. Gastrointestinal tract. Respiratory system. Blood. Liver. Kidneys. Central nervous system.

Chronic Effects: Prolonged or repeated contact may dry skin and cause irritation. Chronic exposure to Diethylene glycol mono-n-butyl ether may cause central nervous system damage.

REEF & OCEAN FRIENDLY



S.D.S.

Safety Data Sheet

BLUEWAVE

COMPLETE BOAT WASH

Concentrated & Eco Friendly

V2.1 January 3, 2022

REEF & OCEAN FRIENDLY

Carcinogenicity: This product does not contain any carcinogens or potential carcinogens above reportable thresholds as listed by ACGIH, IARC, OSHA, or NTP.

Mutagenicity: Not available.

Reproductive Effects: Not available.

Developmental Effects

Teratogenicity: Not available.

Embryotoxicity: Not available.

Toxicologically Synergistic Materials: Not available.

Section 12: Ecological Information

Ecotoxicity: Not available.

Persistence / Degradability: Not available.

Bioaccumulation / Accumulation: Not available.

Mobility in Environment: Not available.

Other Adverse Effects: Not available.

Section 13: Disposal Considerations

Disposal Instructions: Disposal should be in accordance with applicable regional, national and local laws and regulations. Local regulations may be more stringent than regional or national requirements.

Section 14: Transport Information

U.S. Department of Transportation (DOT)

Proper Shipping Name: Not regulated.

Class: Not applicable.

UN Number: Not applicable.

S.D.S.

Safety Data Sheet

BLUEWAVE

COMPLETE BOAT WASH

Concentrated & Eco Friendly

V2.1 January 3, 2022

REEF & OCEAN FRIENDLY

Packing Group: Not applicable.

Label Code: Not applicable.

ICAO/IATA

Proper Shipping Name: Not regulated.

Class: Not applicable.

UN Number: Not applicable.

Packing Group: Not applicable.

Label Code: Not applicable.

IMDG

Proper Shipping Name: Not regulated.

Class: Not applicable.

UN Number: Not applicable.

Packing Group: Not applicable.

Label Code: Not applicable.

Section 15: Regulatory Information

Chemical Inventories US

(TSCA)

The components of this product are in compliance with the chemical notification requirements of TSCA.

Federal Regulations

United States

This SDS has been prepared to meet the U.S. OSHA Hazard Communication Standard, 29 CFR 1910.1200.

SARA Title III

No components are listed.

REEF & OCEAN FRIENDLY

State Regulations Massachusetts

US Massachusetts Commonwealth's Right-to-Know Law (Appendix A to 105 Code of Massachusetts Regulations Section 670.000)

Component	CAS No.	RTK List
Diethylene glycol mono-n-butyl ether	112-34-5	Listed.

New Jersey

US New Jersey Worker and Community Right-to-Know Act (New Jersey Statute Annotated Section 34:5A-5)

No components are listed.

Pennsylvania

US Pennsylvania Worker and Community Right-to-Know Law (34 Pa. Code Chap. 301-323)

Component	CAS No.	RTK List
Diethylene glycol mono-n-butyl ether	112-34-5	Listed.

California

California Prop 65: This product does not contain chemicals known to the State of California to cause cancer, birth defects or other reproductive harm.

Section 16: Other Information

Disclaimer:

The information contained in this document applies to this specific material as supplied. It may not be valid for this material if it is used in combination with any other materials. It is the user's responsibility to satisfy oneself as to the suitability and completeness of this information for their own particular use.



S.D.S.

Safety Data Sheet

BLUEWAVE 

COMPLETE BOAT WASH

Concentrated & Eco Friendly

V2.1 January 3, 2022

Date of Preparation of SDS: January 3, 2022
Version: 2.1
GHS SDS Prepared by: Deerfoot Consulting Inc.
Phone: (403) 720-3700

REEF & OCEAN FRIENDLY

info@bluewavefl.net
<https://bluewavefl.net>

